




Transformational Medicines
for Neurological & Psychiatric Disorders

CORPORATE OVERVIEW



Transforming psychedelic research into cutting-edge medicine

Ceruvia Lifesciences researches, develops, and manufactures neurotransformational medicines to deliver meaningful relief to patients suffering from challenging, hard-to-treat headache and psychiatric disorders

2 Developing two novel compounds across numerous therapeutic areas

- BOL-148 in Headache and Addiction Disorders
- Psilocybin in Headache and Obsessive-Compulsive Disorder

10 Over ten years of funding and coordinating academic research in neurotransformational and psychedelic medicine

- Involvement with leading research and development institutes in psychedelic medicine
- Development programs in partnership with leading medical centers

150 Life sciences expertise that delivers scientific rigor

- Expert technical team with over 150 years industry experience
- Scientific advisors from leading research institutes across USA and Europe

Our strategic focus is on realizing the value of our pipeline assets



Fund

Position ourselves as therapeutic leaders by targeting funding into difficult-to-treat disease areas with great unmet need



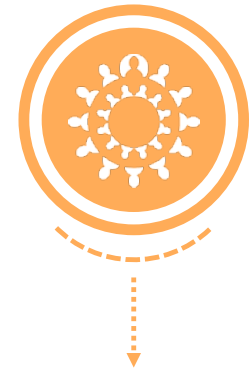
Provide Evidence

Generate robust scientific clinical data from controlled clinical trials with innovative collaborators, partners, academia and industry experts to progress the projects



Advance

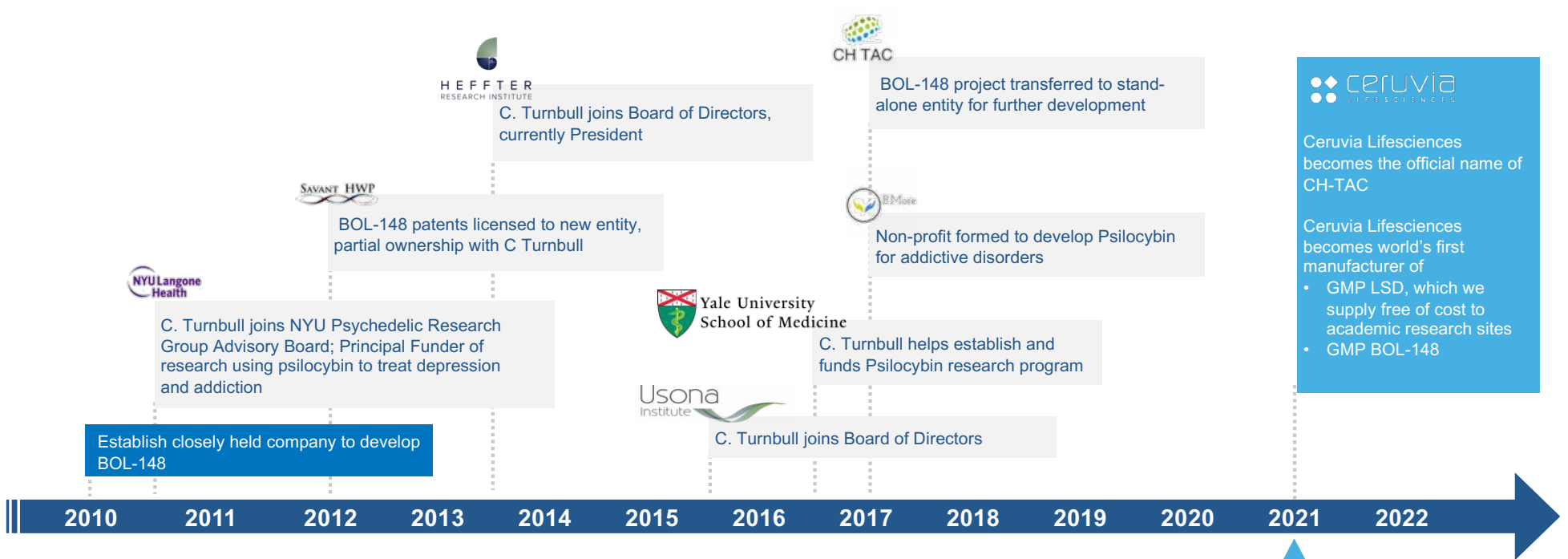
As the world's first manufacturer of GMP LSD and GMP BOL-148, we adhere to the highest development, testing, and manufacturing standards as established by regulatory authorities as well as pharmaceutical industry associations and organizations



Commercialize

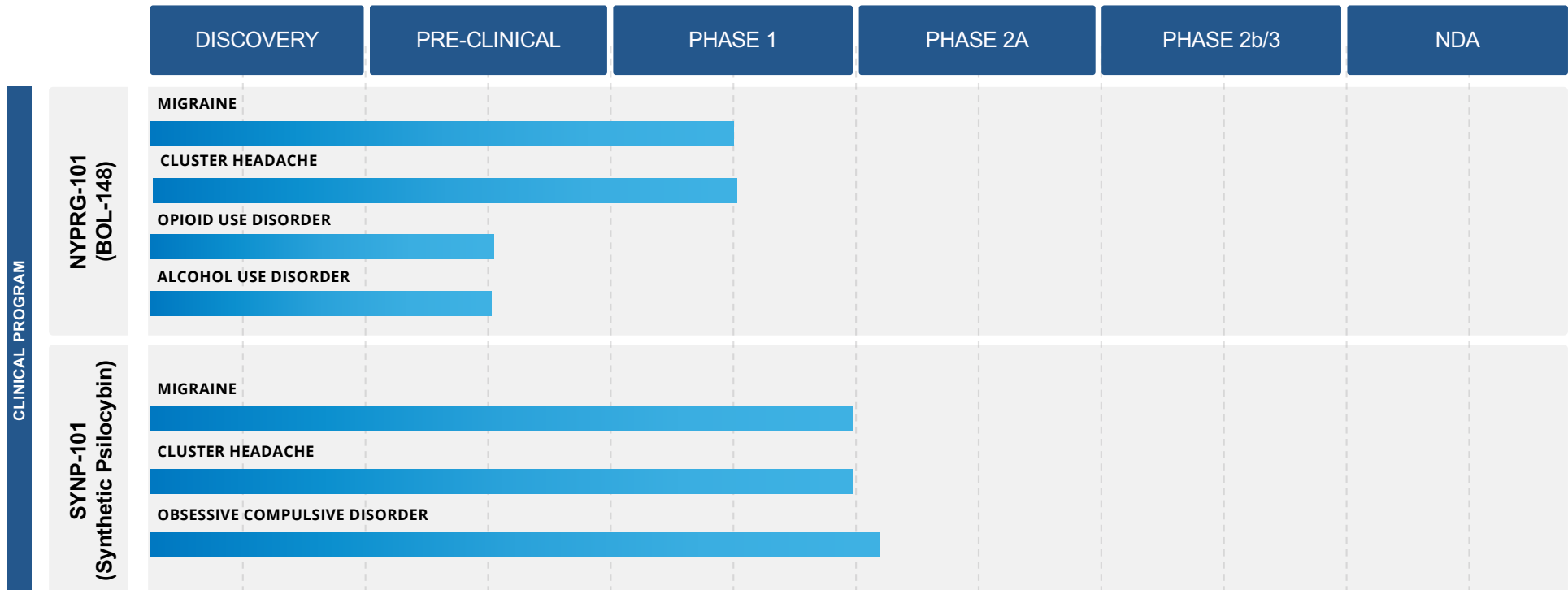
Ceruvia Lifesciences aims to ultimately deploy treatments to create a significant benefit for all stakeholders in our focus areas: patients, caregivers, payers, and healthcare providers

Over a decade of driving clinical research and progress in neurotransformational medicines



Since 2010, Carey Turnbull has contributed as a fundraiser and individual donor over **\$29 MM to Psychedelic Research**

Our Development Pipeline



CLINICAL PROGRAM

Significant burden and unmet needs in the markets we aim to address



Headache Disorders

~40mm

Migraine Patients USA¹

330k

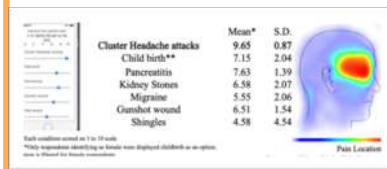
Cluster Headache Patients USA²

More Than Just A Headache

\$36b

Est. Annual Direct/ Indirect Costs of Migraine (USA)³

More Painful Than
Childbirth or Gunshot Wounds⁴



Psychiatric Disorders

3.9mm

Obsessive Compulsive Disorder Patients USA¹

OCD significantly impacts patients' ability to live normal lives

79.9%

Severe OCD patients reported severe role impairment (SDS scale)²

SOURCE:

- <https://migraineresearchfoundation.org/about-migraine/migraine-facts/>
- <https://www.nimh.nih.gov/health/statistics/obsessive-compulsive-disorder-ocd>
- Bonafede et al, Headache 2018
- Source: Schor et al, CHQ Poster, www.Clusterbusters.org, 2017

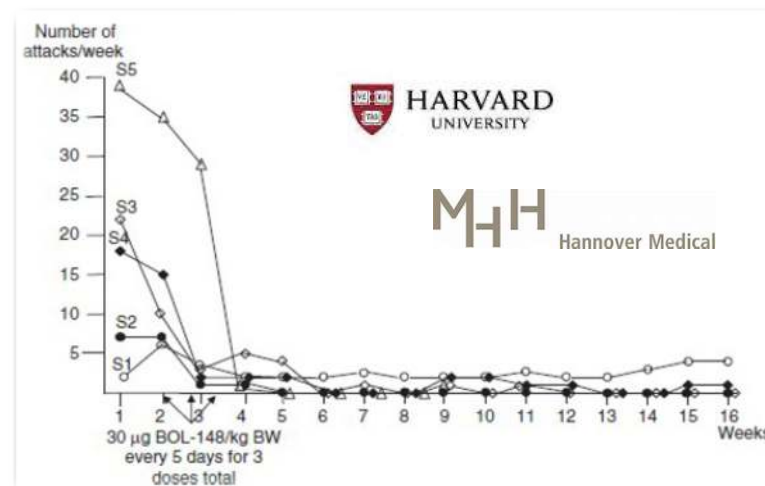
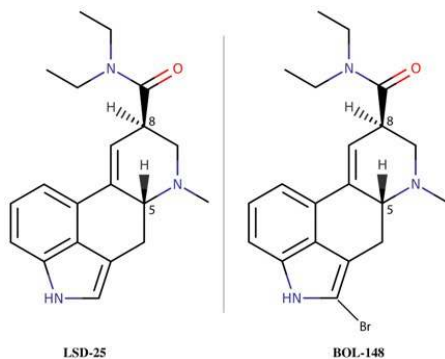
SOURCE:

- <https://www.nimh.nih.gov/health/statistics/obsessive-compulsive-disorder-ocd>
- Source: Ruscio et al, Molecular Psychiatry 2010

NYPRG-101: Promising efficacy without hallucinogenic effects

Pilot Study in Patients with Cluster Headache

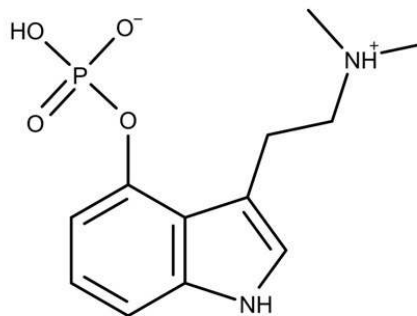
- NYPRG-101 (BOL-148) is a **non-hallucinogenic analog of LSD** used in the past as a placebo
- Results from a pilot study in Cluster Headache suggest long-term efficacy following brief treatment
- **Safely administered** pre-clinically & clinically to ~300 humans



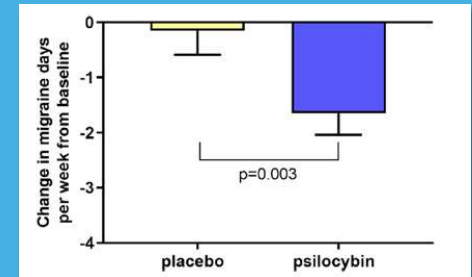
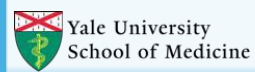
- Open-label, uncontrolled study at **Harvard/ Hannover**
- 5 BOL-148 subjects, 3 oral doses over 10 days
- **100% patients reported significant relief of CH symptoms**

SYNP-101: Building on promising research at leading universities

- SYNP-101 is a synthetic form of the naturally occurring compound, psilocybin, found in at least 200 species of mushrooms
- For over a decade, thousands of cluster headache sufferers have self-medicated using psilocybin with exceptional results
- Psilocybin has been shown to be safe when administered in a therapeutic setting



Exploratory study suggests there is an enduring therapeutic effect in migraine headache after a single administration of psilocybin. *Schindler et al, Neurotherapeutics (2020)*



3 of 5 OCD patients randomized to receive psilocybin exhibited robust reductions in acute Yale-Brown Obsessive-Compulsive scores (Y-BOCS)”

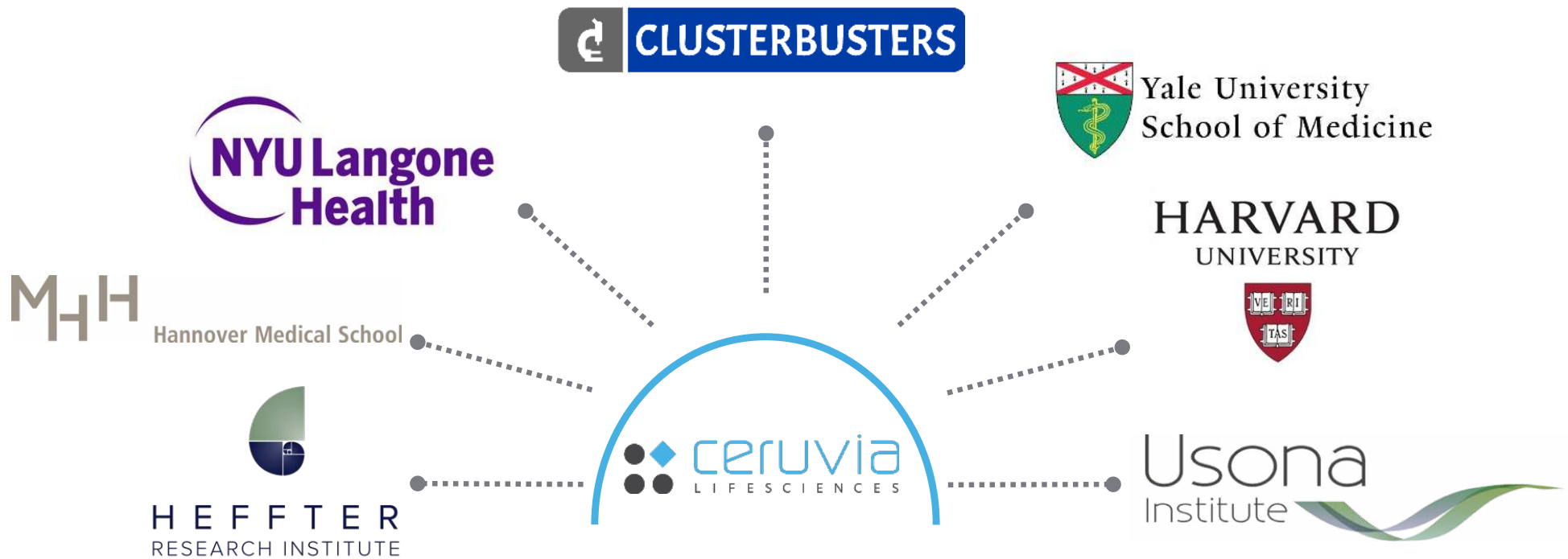
Kelmendi et al. Examining the Effect of Psilocybin in the Treatment of Treatment-Resistant OCD Poster ANCP (2020)



Based on interviews with researchers, 22 of 26 patients with cluster headache reported that psilocybin aborted attacks and 18 of 19 reported remission period extension. *Sewell et al, Neurology (2006)*



Ceruvia Lifesciences has established collaborations with leading institutions and stakeholders



Experience that knows how to deliver value



Kathleen Monroe
COO
20+ years Pharmaceutical
Project Management



Judy Ashworth, MD
Clinical & Regulatory Strategy
20+ years Analgesic &
CNS Drug Development



Jeanne Bonelle
CMC, QA
40+ years in Quality Assurance
and CMC development



Judy Carmody, PhD
QA
25+ years Quality Assurance GMP



Shayne Gad, PhD, DABT
Pharmacology & Toxicology
40+ years Toxicology &
Pharmacology



Eric Galia
Project Lead
20+ years CMC Development &
Pharmaceutical Project
Management



Sophie Goubet Sieradzki
Clinical Research Associate (OCD)
20+ years Clinical Research



Tom Huijbers
Regulatory Affairs, R&D
20+ years Regulatory
Pharmaceutical Strategist



Carey Turnbull
FOUNDER / CEO
10+ years Investment/
Philanthropy in Psychedelic
Medicine



Ryan Lanier, PhD
Clinical Scientist
20+ years Pre-Clinical & Clinical
Development of CNS Drugs



Stephan Loose, MBA
Business Development
15+ years Pharmaceutical
Commercialization & Business
Development



Amy Poshusta, PhD
Non-clinical Development
20+ years Pharmaceutical
Drug Development



John Wetzel, PhD
CMC
30+ years Pharmaceutical Drug
Development & CMC

Leading experts as part of the Scientific Advisory



Michael Bogenschutz, MD
 NYU Langone's Department of Psychiatry
 Professor, Department of Psychiatry at NYU Grossman School of Medicine, Addiction & Social Anxiety Disorders



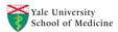
Bob Jesse
 Advisor
 Founder, Council on Spiritual Practices



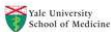
Chris Pittenger, MD, PhD, FAPA, FANA
 Yale University School of Medicine
 • Professor of Psychiatry
 • Assistant Chair for Translational Research, Psychiatry
 • Director, Yale OCD Research Clinic
 • Director, Neuroscience Research Training Program, Yale Department of Psychiatry



Deepak D'Souza, MBBS, MD
 Yale University School of Medicine
 • Clinical Director & Psychiatrist at VA Connecticut Healthcare System
 • Director, VA-Yale Schizophrenia Research Fellowship program
 • Director, Schizophrenia Neuropharmacology Research Group at Yale (SNRGY)



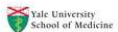
Ben Kelmendi, MD
 Yale University School of Medicine
 • Assistant Professor of Psychiatry, Yale University School of Medicine



Emmanuelle Schindler, MD, PhD
 Yale University School of Medicine
 • Assistant Professor of Neurology, Yale School of Medicine
 • Medical Director, Headache Center of Excellence, VA Connecticut Healthcare System



Christoph Gottschalk, MD, FAHS
 Yale University School of Medicine
 • Assistant Professor of Clinical Neurology
 • Chief, Division of General Neurology, Neurology
 • Director, Fellowship Program, Headache & Facial Pain Center



David Nichols, PhD
 UNC Eschelman School of Pharmacy
 • Adjunct Professor UNC Eschelman School of Pharmacy
 • Founding President Heffter Research Institute



Bob Wold
 Cluster Busters
 • Founder and President – Clusterbusters, Inc.
 • Board of Directors – AHDA (Alliance for Headache Disorder Advocacy)



Jack Henningfield, PhD
 Regulatory Strategy
 • Vice President, Research, Health Policy, and Abuse Liability, Pinney Associates
 • Adjunct Professor, Behavioral Biology, Medical School's Department of Psychiatry and Behavioral Sciences



Torsten Passie, PhD
 Hannover Medical School
 • Professor of Psychiatry and Psychotherapy – Hannover Medical School, Germany
 • Visiting Professor (2012-2015) – Harvard Medical School, MA, USA



William Young, MD
 Jefferson University Hospital
 • Professor of Neurology and Co-Director Inpatient Program, Jefferson University Hospital
 • Founder, Physician & Advisor Coalition for Headache and Migraine Patients (CHAMP)





Ceruvia Lifesciences represents a unique opportunity to make a significant impact

We believe patients suffering from debilitating headache disorders and difficult-to-treat psychiatric disorders, like OCD, no longer have to live this way.

PROMISING

Promising real-world and clinical data support a truly differentiated efficacy profile with good safety and tolerability

DIFFERENTIATED

All compounds in the portfolio have the potential to be clearly differentiated from current standard of care in conditions with significant unmet needs

SUPPORTED

Modes of action support efficacy in other indications for product life-cycle management

SIGNIFICANT

Significant unmet needs with a substantial disease burden means significant benefit can be brought to patients

REWARDING

Robust data and going concern status support commercial returns



Transformational Medicines
for Neurological & Psychiatric Disorders

www.ceruvialifesciences.com

investors@ceruvialifesciences.com